

CREATING A PROSHOW SLIDESHOW



Workshop presentation by Robin Pitcher – basic workflow and a few tips

CREATING A PROSHOW SLIDESHOW

1. When you first use **ProShow**, set up **Preferences**.

* Set up the ‘ **Maximum Internal Rendering Resolution**’ to match your computer screen. Eg: 1920ppi

* Set up defaults for slide settings, external editors etc.

2. **Prepare your** photos and save as **jpegs into a separate folder**. Resize the images to 2800 x 2800 @240 ppi. If you know what music you want to use, save it into this folder as well. Do not delete or move this folder or you will not be able to edit or recreate your show.

CREATING A PROSHOW SLIDESHOW

3. Select **New Show** and set up **title, screen aspect and transition effects.**
4. Widescreen (16:9 ratio) is good for TV and most screens. Keep transitions simple.
5. Add photos to show either:
 - **Add all files to show** or
 - **Drag and drop photos** in the order you wish

CREATING A PROSHOW SLIDESHOW

6. Add Audio

- * Sync slides to audio or
- * Adjust start and/or end of music to match the length of the show

7. If you like the effect of slight motion, go to > slide>effects> motion effects and adjust zoom by adjusting 'starting' and 'ending' position, N.B. 'Ken Burns' effect. Be careful not to overdo it!

CREATING A PROSHOW SLIDESHOW

8. Adjust **slide** and **transition** time as appropriate
9. Preview show and make any adjustments.
10. Select **output** for show e.g.: **DVD, PC exe file** etc
11. Create **Menu** for show or shows

CREATING A PROSHOW SLIDESHOW

12. Under 'Options':

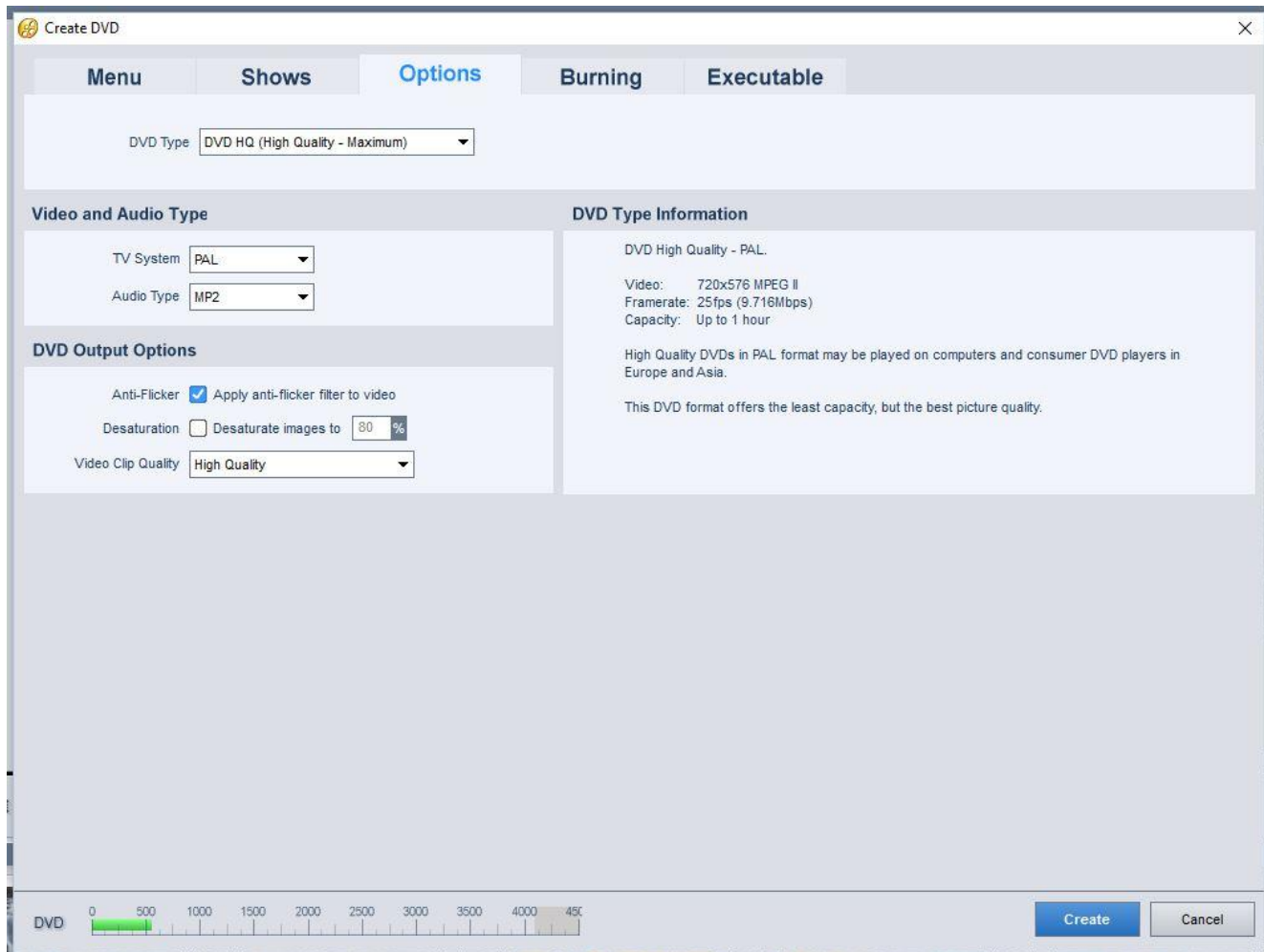
- Select **PAL**
- For Audio select **MP2 or PCM**
- Tick **Anti-Flicker** and **Desaturation – 0%**
- Encoding Quality - High

13. For **exe file** or **PC autorun**:

- **Window size**: the same as your computers screen resolution, as set in Preferences.

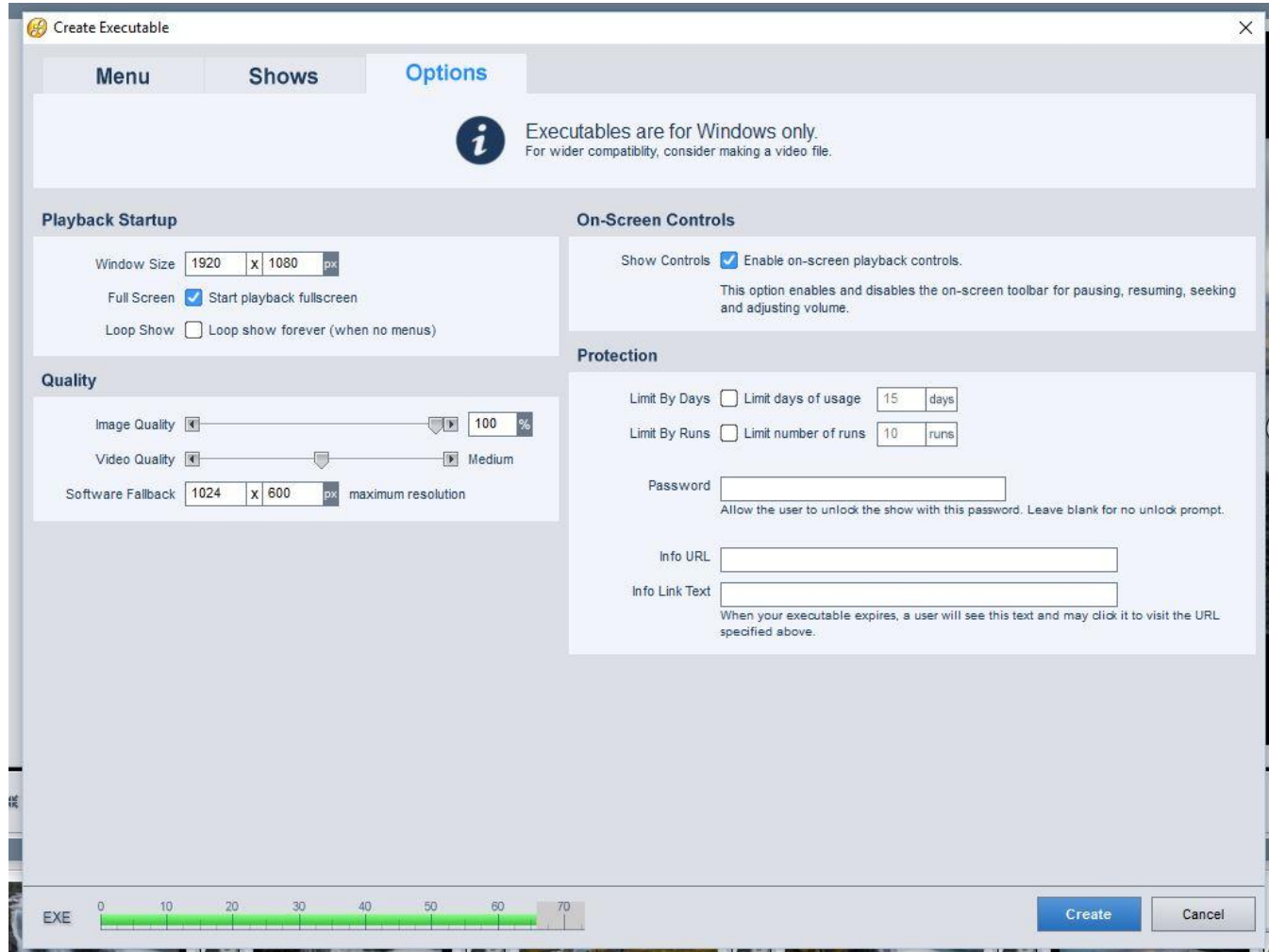
CREATING A PROSHOW SLIDESHOW

14. Suggested settings for DVD burning:



CREATING A PROSHOW SLIDESHOW

15. Suggested settings for PC exe file:



CREATING A PROSHOW SLIDESHOW

16. There are many other options to use in ProShow:

- Add blank slides with text
- Add text to any slide
- Use **slide styles**
- Specify the **slide timing** of any slide and lock it in.
- Use different **backgrounds**, either an image or different colours. There is also an built in **Background** file to select from.
- You can add layers to a slide with different motion effects

CREATING A PROSHOW SLIDESHOW

This software slideshow program can only be purchased online at:

<http://www.photodex.com/>

It can be downloaded online or from the installation CD (if purchased).

After purchasing on-line, Photodex sends the purchaser an email with the full Registration details. This enables the purchaser to download the software again at any time. The software can also be downloaded to any computers the purchaser owns as long as it is not for commercial purposes.